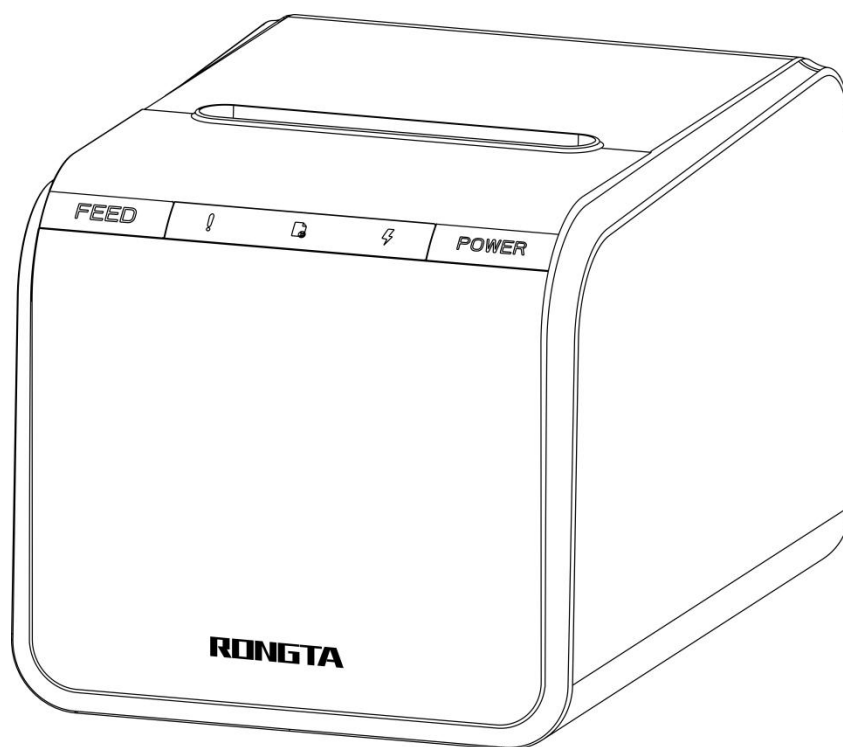
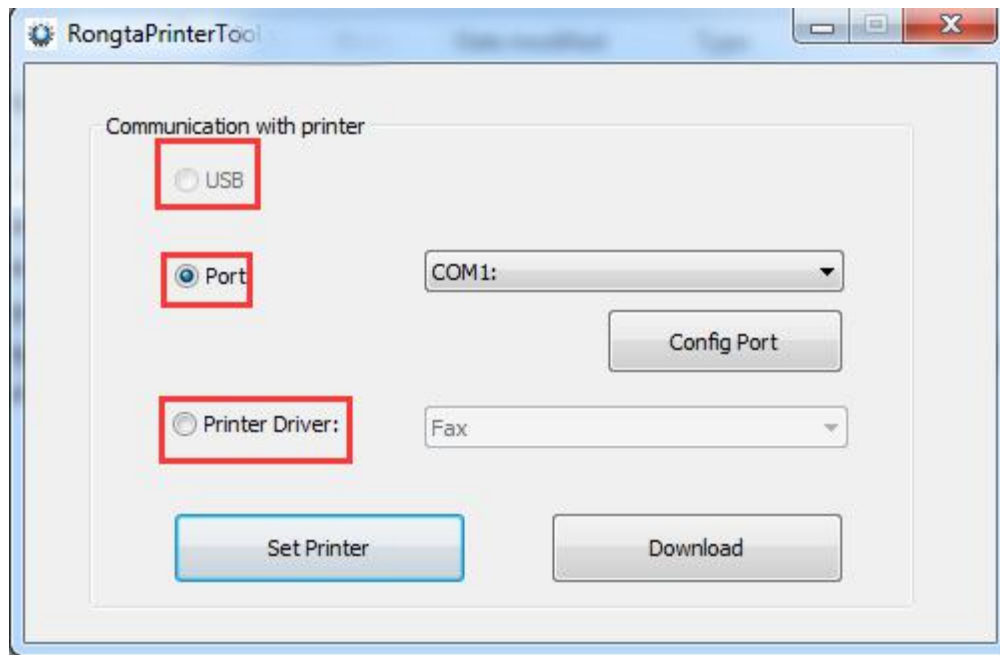

ACE G1Y Thermal Receipt Printer Setting Integration Tool Manual



This tool is independently developed by Rongta Technology (Xiamen) Group Co., Ltd. It integrates the setting functions of thermal printer, such as serial port setting, network port setting, language setting, update, etc., powerful, practical and easy to use.

1.Connect to the printer

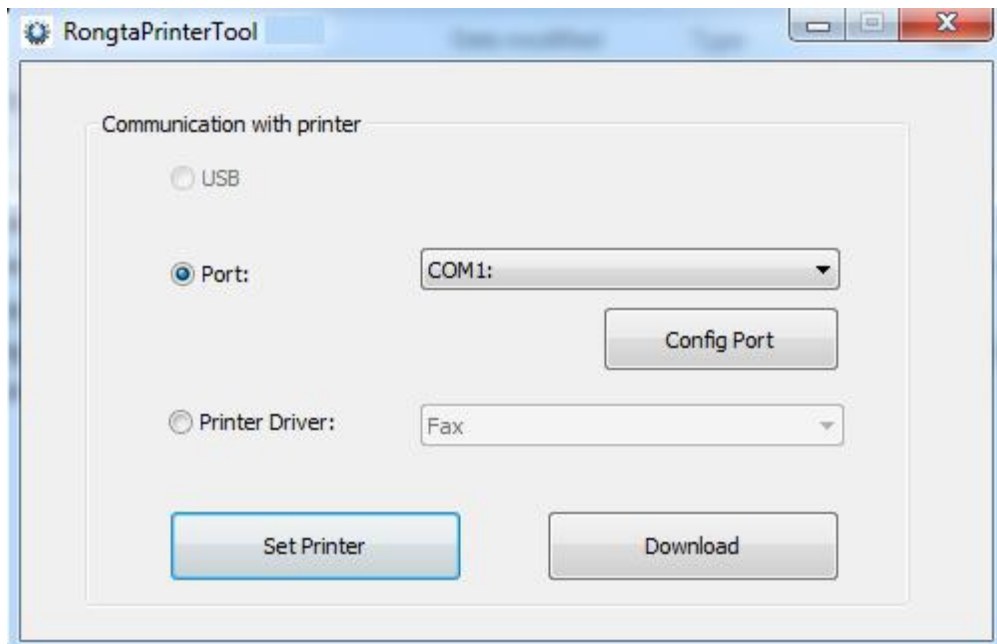
Double click tool“RongtaPrinterTool.exe” and the following screen will appear;



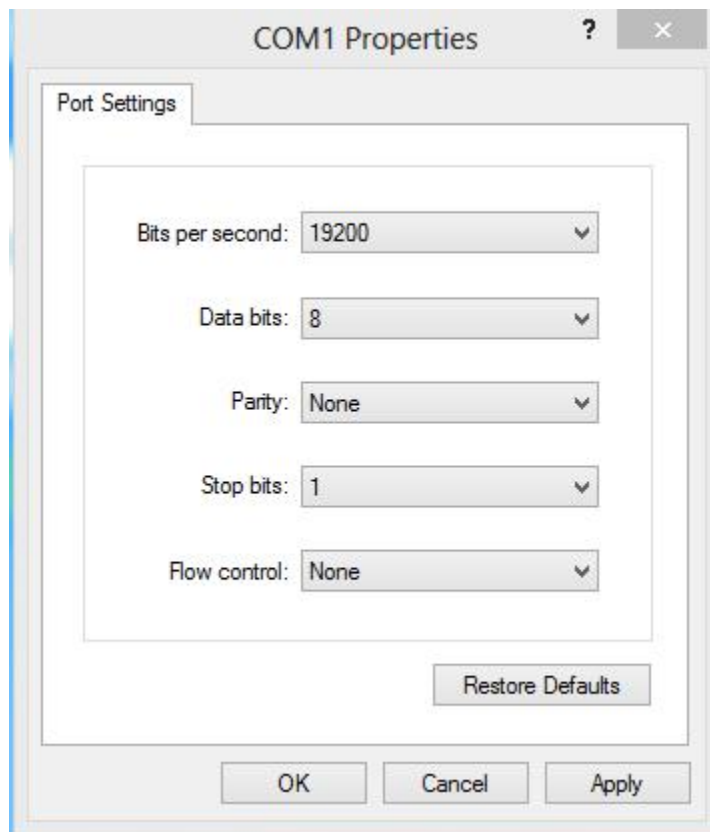
As shown in the figure above, there are 3 methods to connect to the printer.

1.1 If the printer is connected via USB, select USB directly, and then "Set Printer" or "Download" program. (If the printer is connected via USB, then USB can be selected. If not, the USB option is gray and cannot be selected, as shown in the figure above.)

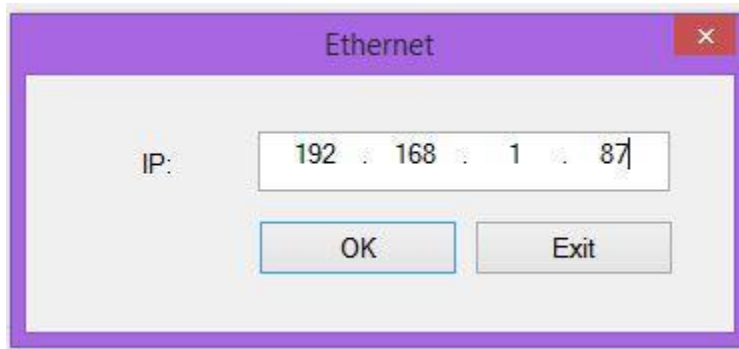
1.2 The printer can be connected through the serial port, network port or parallel port. After "Configuring Port", the printer can be connected, and then "Set Printer" or "Download" program.



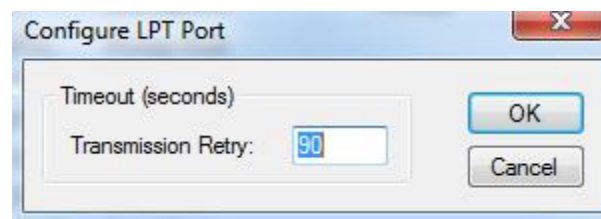
a. Select a serial port and configure it.



b. Perform IP configuration after selecting a network port and connect the printer.



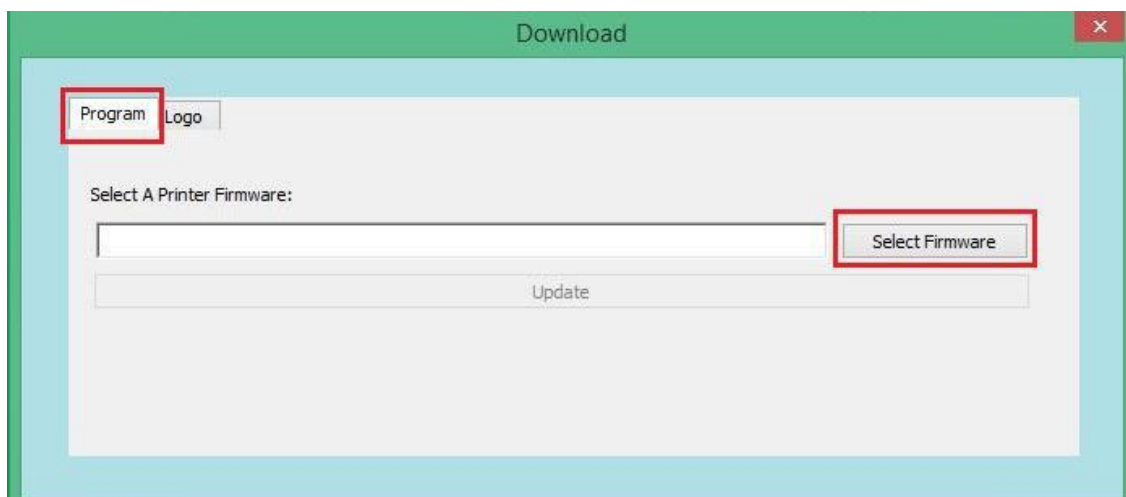
c. Select a parallel port.



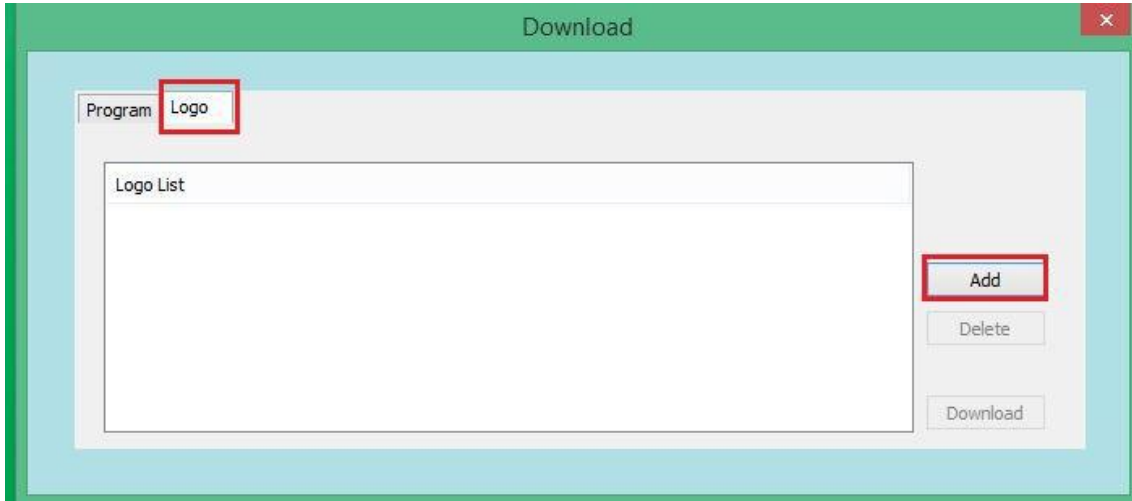
1.3 Connect the printer through the common connection mode of driver (it is necessary to select and set the corresponding port of the driver first), and then "Set Printer" or "Download" program.

2. "Download" function in the main screen

Click "Download" and the following screen will appear



2.1 Update "Program". Click "Open File", select the corresponding program path, and click "Update" to update the program.



2.2 Add "Picture". Select "LOGO", click "Add", select the corresponding path, and add LOGO to the printer.

Note: In this tool, the added LOGO only supports pictures in bmp format (black and white bitmaps, or 32-bit full-color bitmaps), and other formats are not supported. The requirements for the supported bitmap size are as follows:

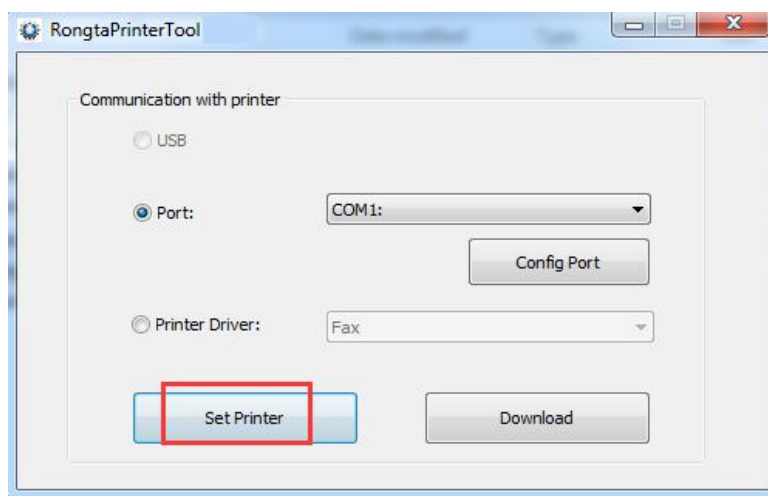
2.2.1 The picture size must be less than 64k

2.2.2 Picture width requirements are:

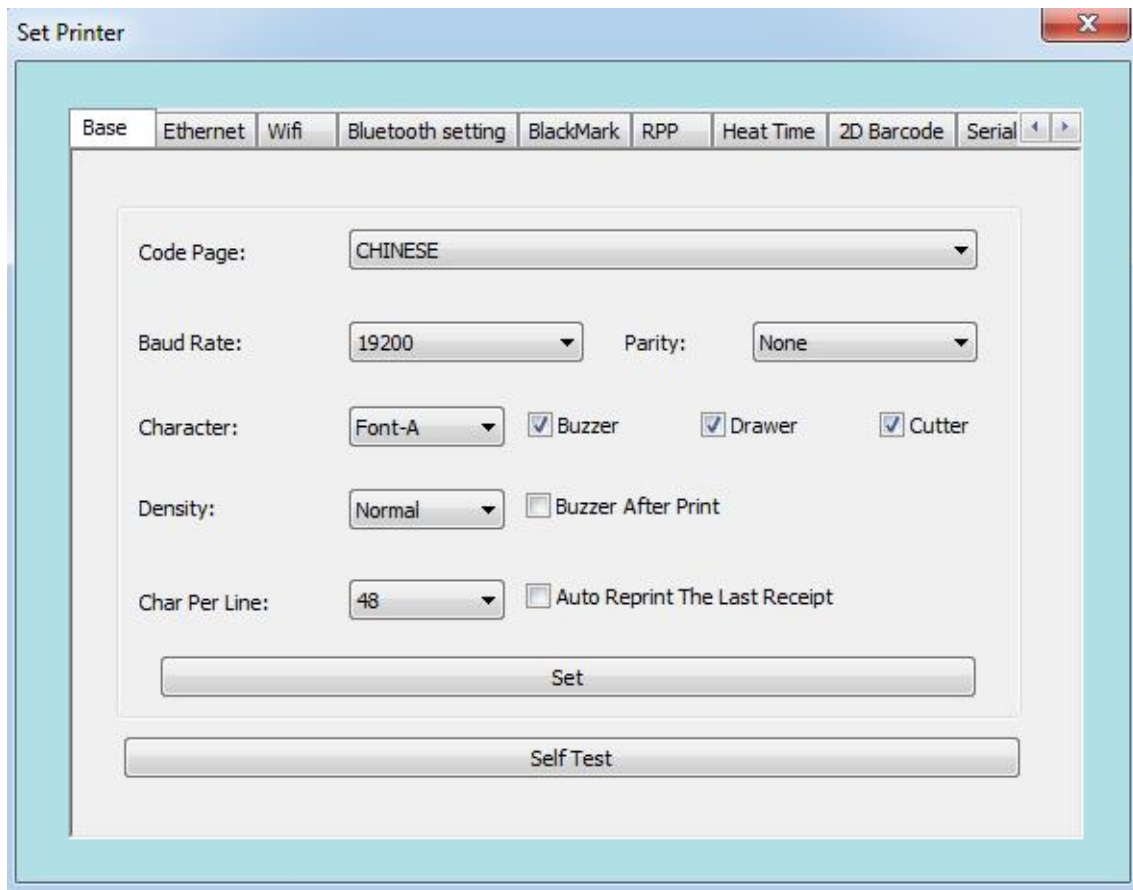
The width of 80 shall be less than 576 pixels.

The width of 58 shall be less than 384 pixels.

3. "Set Printer" function in the main screen



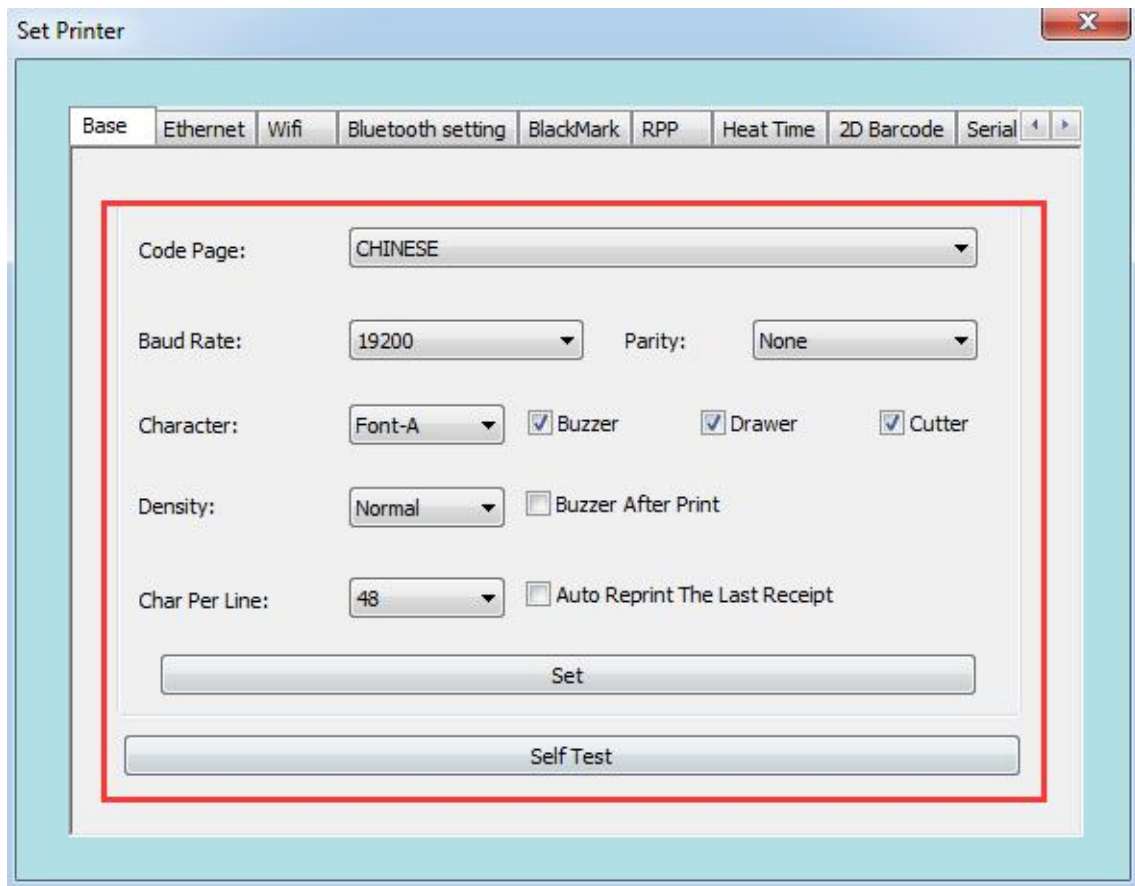
Select "Set Printer" in the main screen and the following screen will appear:



It mainly includes 14 interfaces.

3.1 "Basic Settings"

User can set the printer's language, baud rate, font, print density, cashbox, diffusion knife, etc. according to his needs, and then perform "Print Self-test Page" to check whether the change is complete.



Note: If you use a serial port for printing, after the baud rate is changed, you need to return to the main screen to reconfigure the baud rate of the serial port before using the setting tool again.

3.2 Ethernet

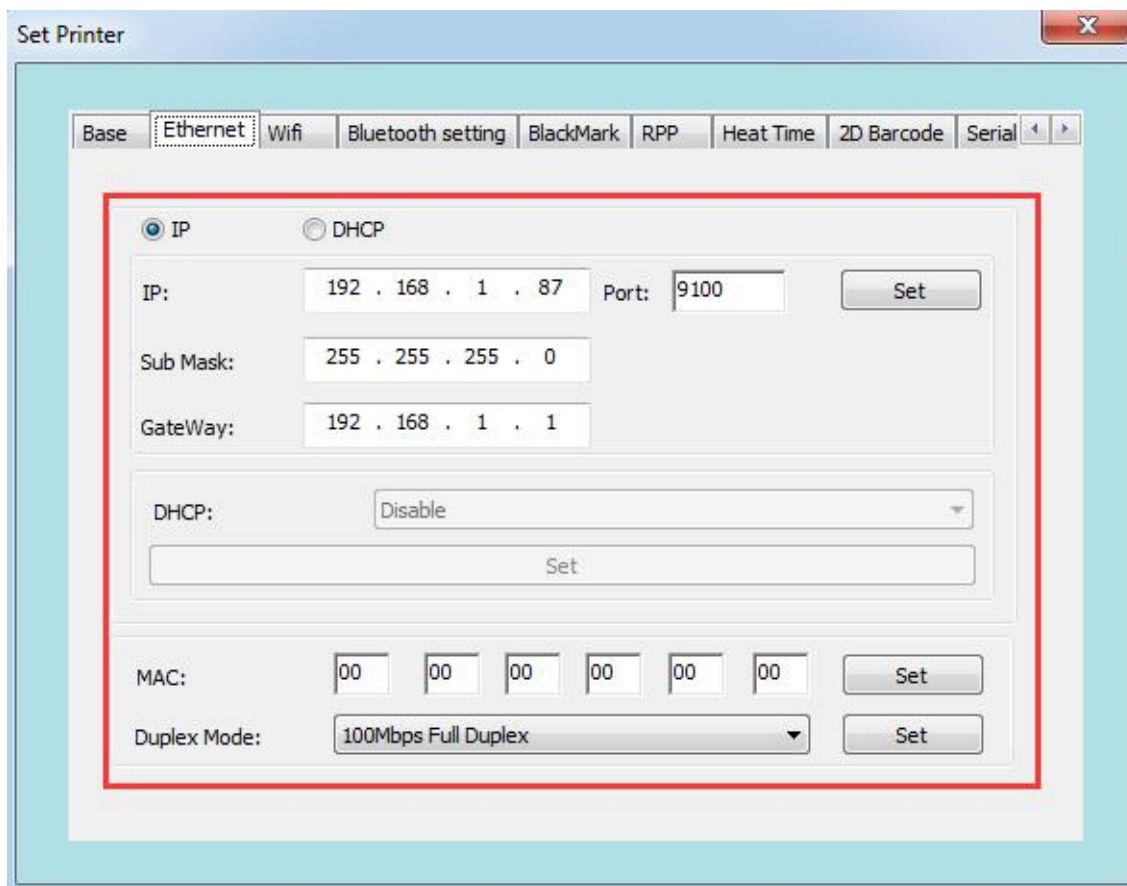
3.2.1. Set the IP address of the printer, change it to "192.168.1.87", and set the communication port

3.2.2 Set the printer's subnet mask and change it to "255.255.255.0"

3.2.3 Set the printer's gateway as "192.168.1.1"

3.2.4 Set the printer's DHCP function. The printer's DHCP is disabled by default. If necessary, it can be enabled to make the printer automatically obtain the address

3.2.5 Set the Mac address and set the network transmission rate.



Attention:: Before setting the web address, if the printer is connected with one of following two methods: "One" uses the "Internet port", "Two" the IP address in the print driver mode. After changing the IP, the printer's IP address is changed. At this point, the printer is disconnected from the tool, and the IP address of the tool needs to be reset before connecting the printer. Other connection methods are not affected.

3.3 “WIFI”

If the printer supports WiFi connection, you need to set the WiFi parameters.

3.3.1 Wireless router setting instruction

- 1.Set the SSID, namely the router name, in the WiFi settings of the router.
- 2、 Wireless network security settings
 - (1) Do not enable wireless security" can be selected;

(2) If encryption is required, WPA-PSK/WPA2-PSK is recommended. The authentication type can be one of "Auto", "WPA-PSK", and "WPA2-PSK". The recommended encryption algorithm is AES. PSK password can be set by yourself.

(3) Wireless network security settings can also use WEP type, which is not recommended. If you have to adopt this authentication type, you can choose one of "Auto", "Open System", and "Shared Key". For the WEP key format, please select "ASCII code". The password can be defined by yourself.

3.3.2 WiFi printer parameter setting instruction

(1) Open the integrated setting tool " RongtaPrinterTool " included in the CD

(2) According to the instruction manual of this setting tool, first make sure that the printer is connected.

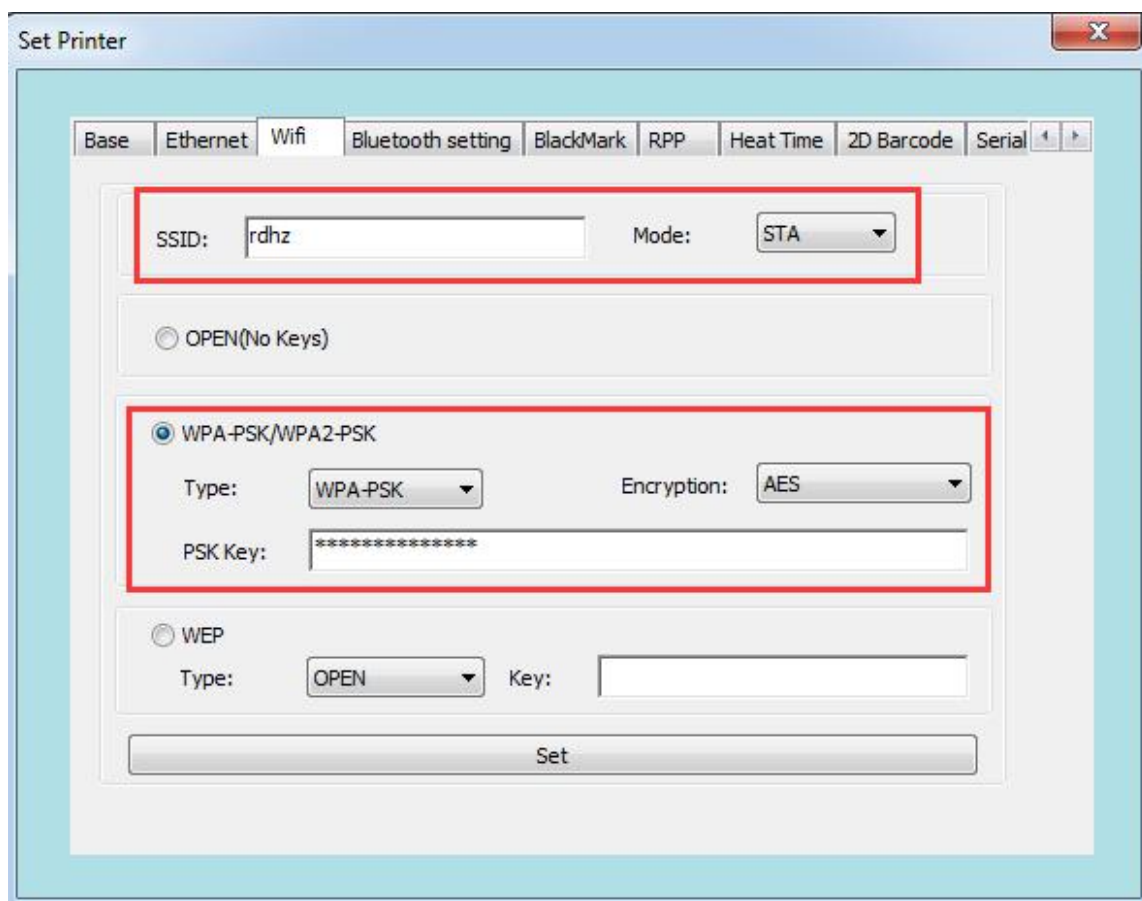
(3) Open the setting tool and select "WiFi".

(4) Input the SSID (WiFi name) to which the printer is connected, and the corresponding mode.

(5) Enter the WiFi encryption type and the WiFi password, as shown in the figure. For example, add WiFi rdhz, with the password encryption type of WPA-PSK, enter the WiFi password, and click "Set".

(6) After clicking "Set", the printer will print the set WiFi parameters. Please print a self-test page and compare the printed WiFi parameters with those of the router. If matched, please wait patiently and the printer will connect to the WiFi within 1 minute. If not matched, please reset and repeat the above steps.

Note: The factory default IP address of the printer is 192.168.1.87. If the printer's IP address and the wireless router's IP address are not on the same network segment, you need to set the printer's IP address to ensure the two addresses are on the same network segment. For specific IP address settings, please refer to 3.2 "Ethernet" settings.



3.4 Bluetooth Settings

If the printer has Bluetooth function, you can set the Bluetooth parameters.

(1) First press and hold the FEED button of the printer, and then turn on the printer to print the self-test page. From the self-test page, find out the Bluetooth pairing name and password of the printer.

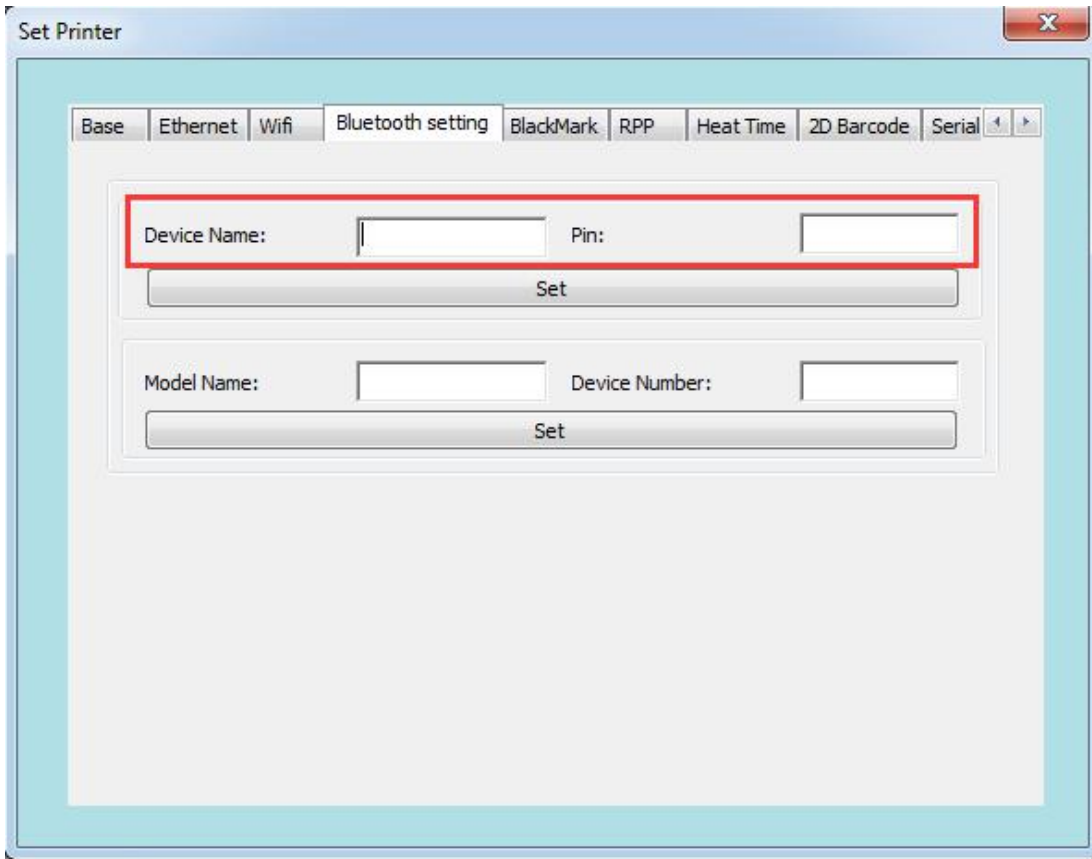
(2) The Bluetooth pairing name and password can be changed if necessary. At this time, the "Bluetooth Settings" function in the integrated setting tool needs to be used, as shown in the figure below.

(3) Enter the new "Device Name" and "Pin" for the printer Bluetooth, and click "Set". After the printer is restarted, the settings are changed successfully.

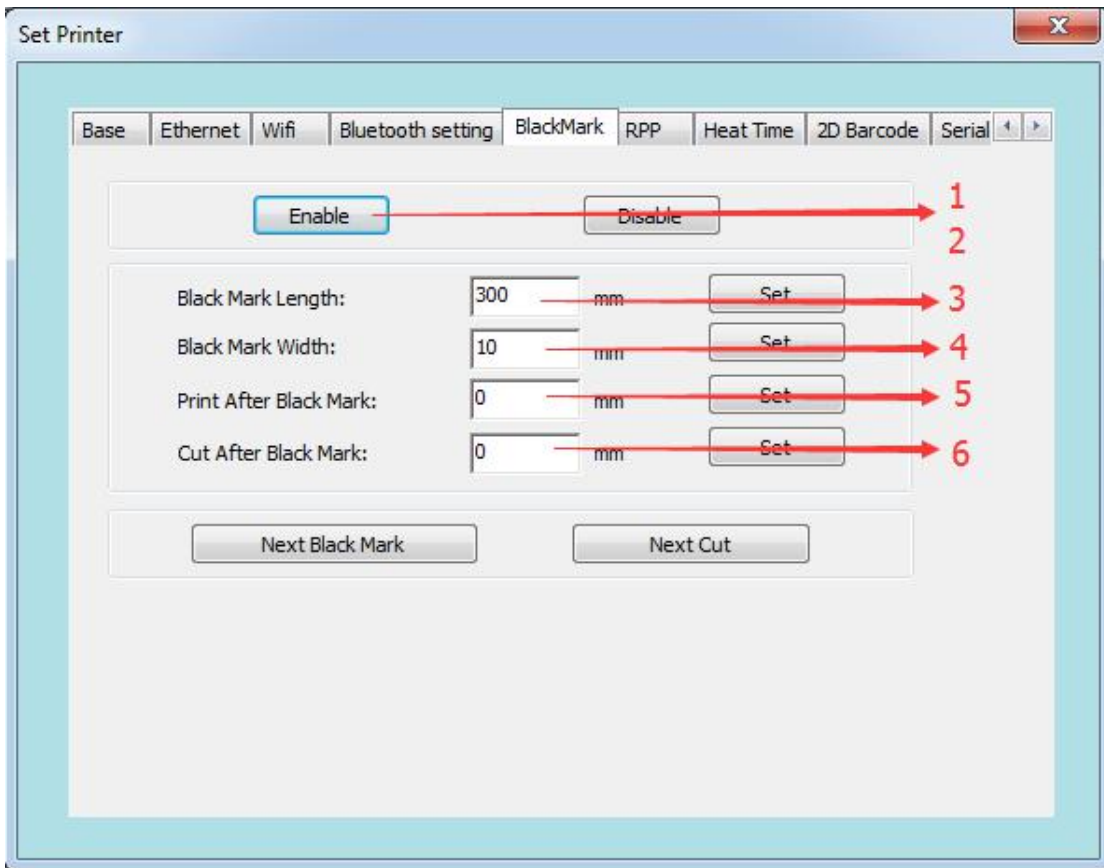
(4) Power on the main device and search for the external Bluetooth device

(5) Find the Bluetooth printer just changed and enter the corresponding password to complete the pairing. When pairing, the printer must be on.

Note: During pairing, please do not turn on multiple printers at the same time; otherwise, you may not be able to judge which printer was successfully paired.



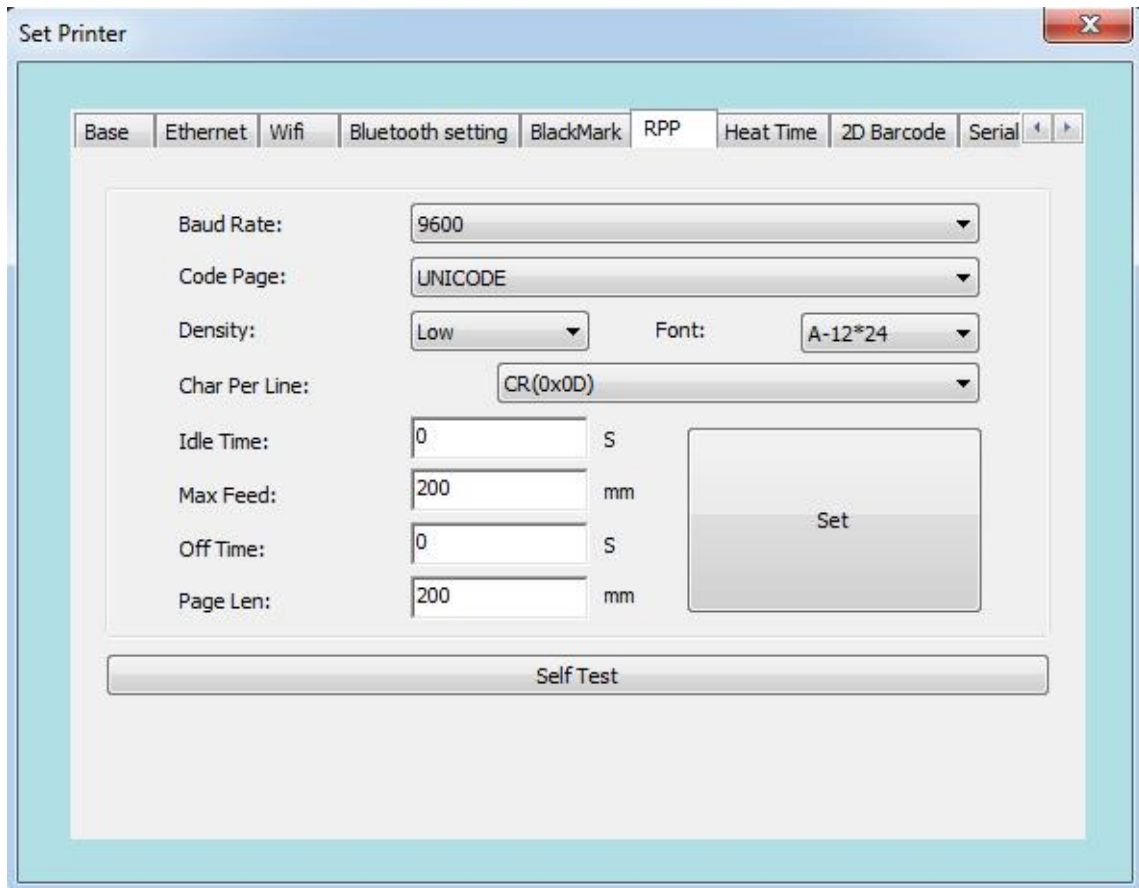
3.5 Black Mark



-
- 1、 "Enable Black Mark" is used to enable the black mark function. The printer will beep once if it is enabled successfully;
 - 2、 After enabling black mark, turn off the printer and then turn it on again. You must restart the printer before setting the black mark parameters.
 - 3、 Enter the length of the black-marked paper, that is, the length of paper between the two black marks. The setting value should be greater than the actual length of the black-marked paper.
For example, if the length of the black-marked paper is 200mm, the setting value can be 400mm. After inputting, click "Set". If the setting is successful, the printer will beep once.
 - 4、 If you input 10mm for "print start position", the printer will start printing from the position 10mm after the black mark. After inputting, click "Set". If the setting is successful, the printer will beep once.
 - 5、 The set width of the black mark should be greater than the actual value. If the actual width of the black mark is 10mm, the setting value can be 20mm. After inputting, click "Set". If the setting is successful, the printer will not beep.
 - 6、 If you input 10mm for "paper-cutting position", the printer will cut paper at the position 10mm after the black mark. After inputting, click "Set". If the setting is successful, the printer will beep once.

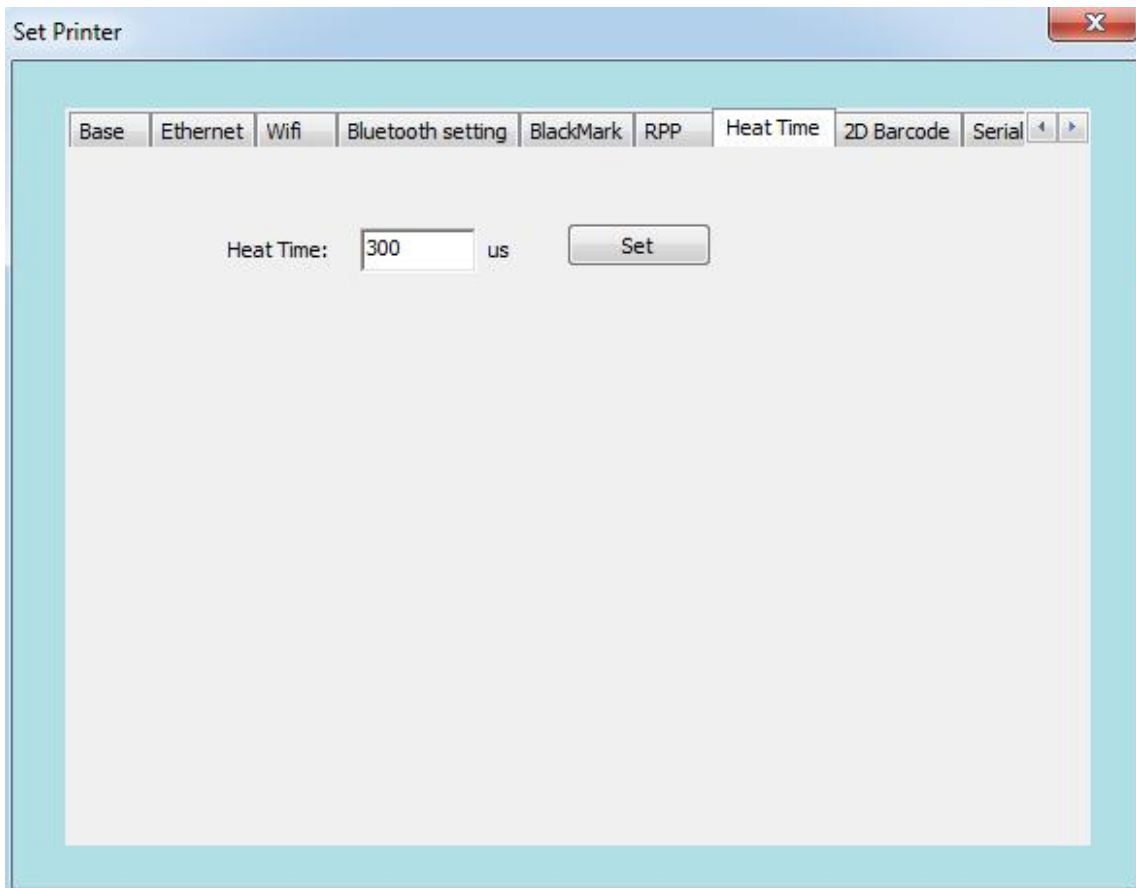
3.6 Baud rate, print density, etc. of a "mobile" printer

This page is mainly for mobile printers, such as 200 series. Customers can modify the baud rate, character set to be used, print density, supported fonts, etc. according to their needs.



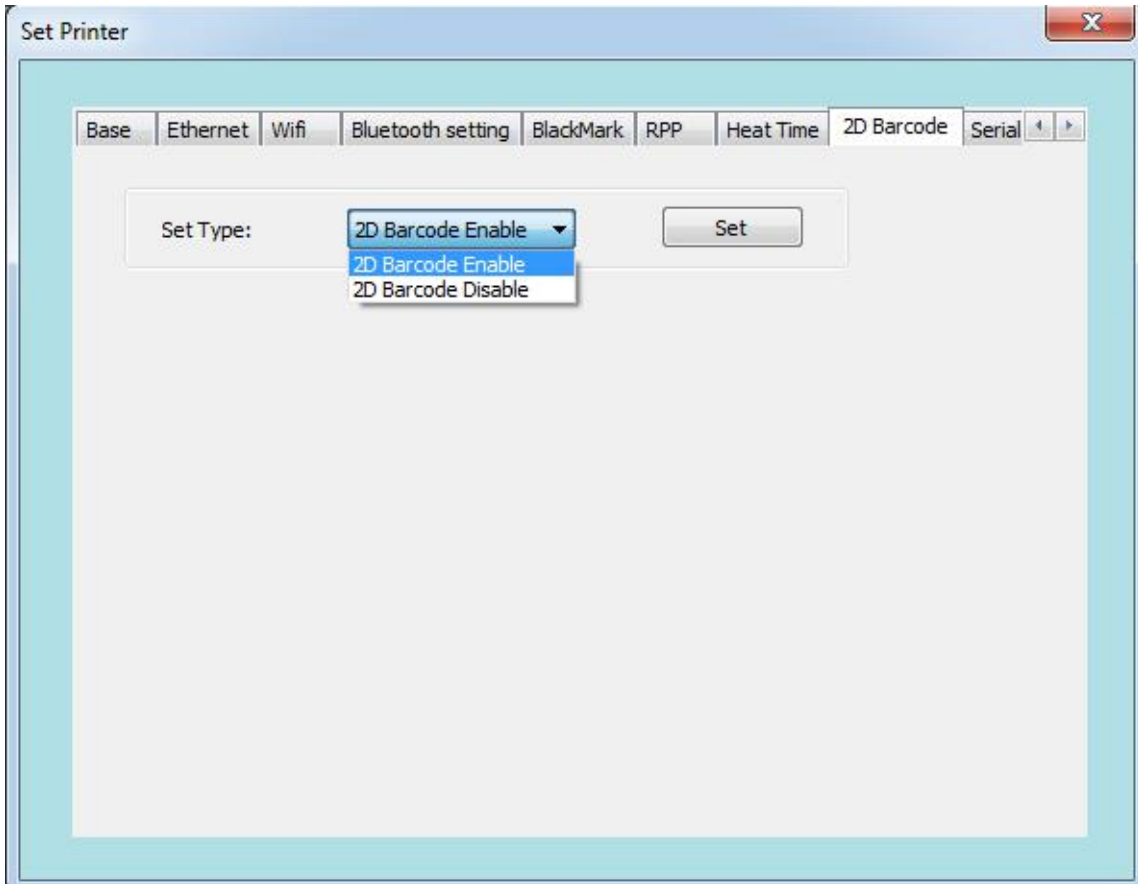
3.7 Printer mechanism heating time

Enter the required heating time, and then select "Settings". After setting, print a self-test page to check whether the heating time parameter has been changed to the set value.

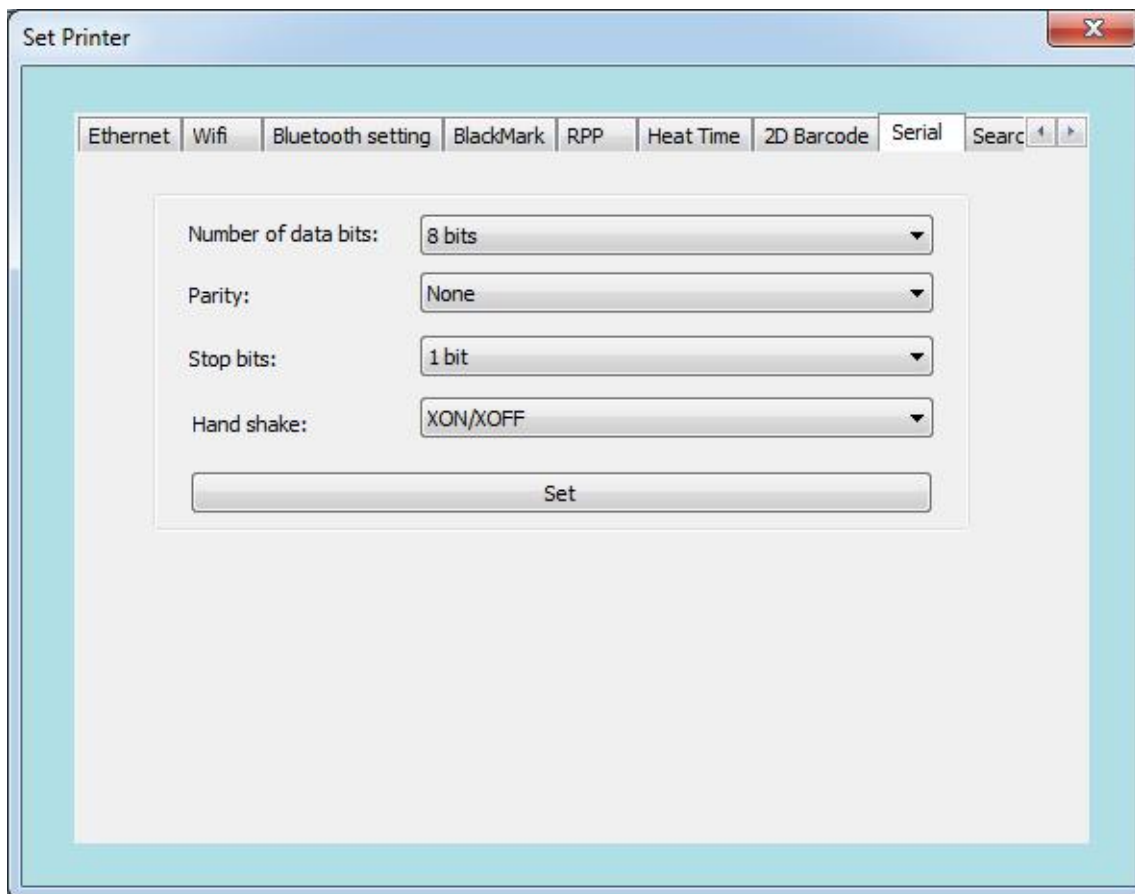


3.8 "QR Code"

This function can set the printer to "Enable/disable printing of QR code". After setting, print a self-test page to check whether the QR code can be printed.

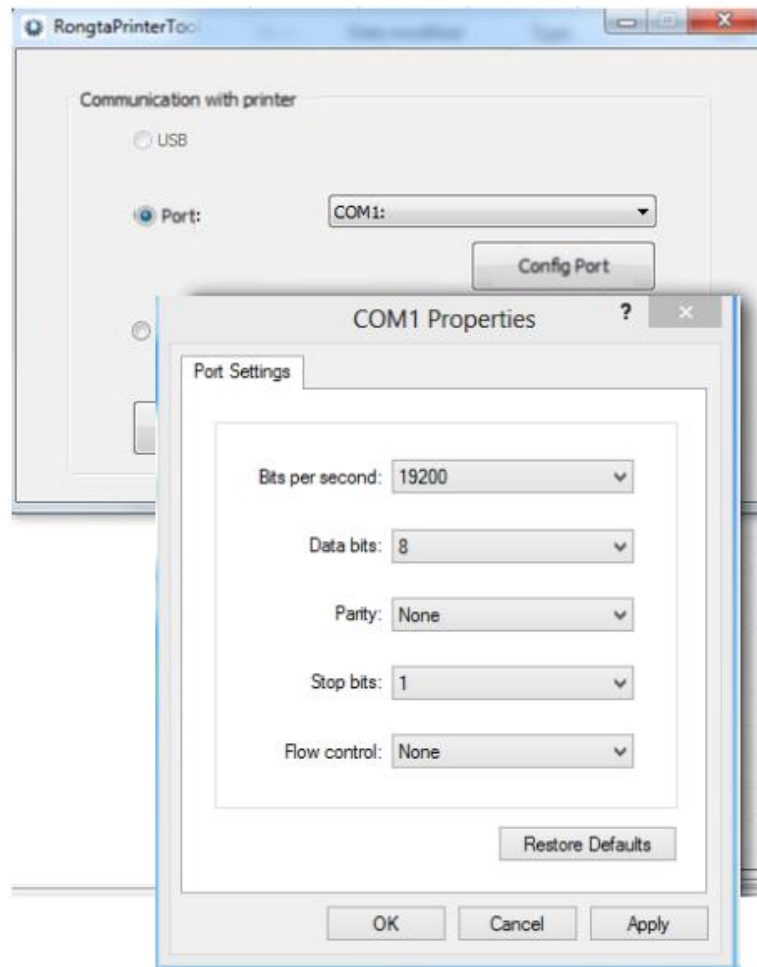


3.9 "Serial Port Settings"



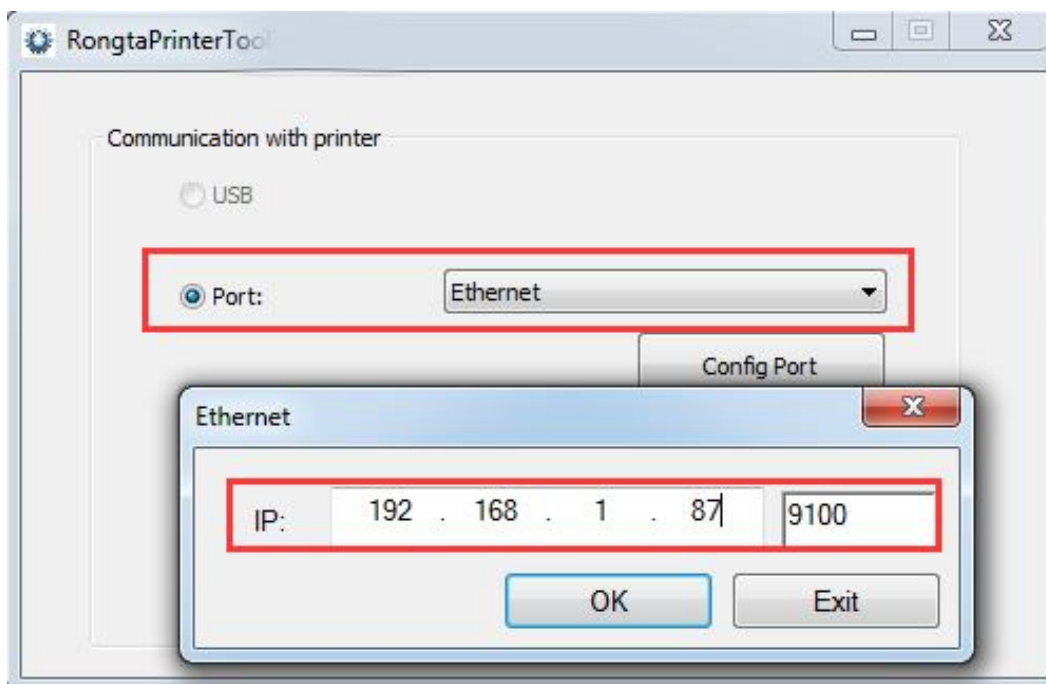
You can change the serial port parameters of the printer according to your needs, such as data bits, handshake signal protocol, etc.

Note: After setting the serial port, the printer's serial port parameters have changed. You need to return to the main screen and reconfigure the serial port (the configuration parameters must be consistent with the parameters you modified)

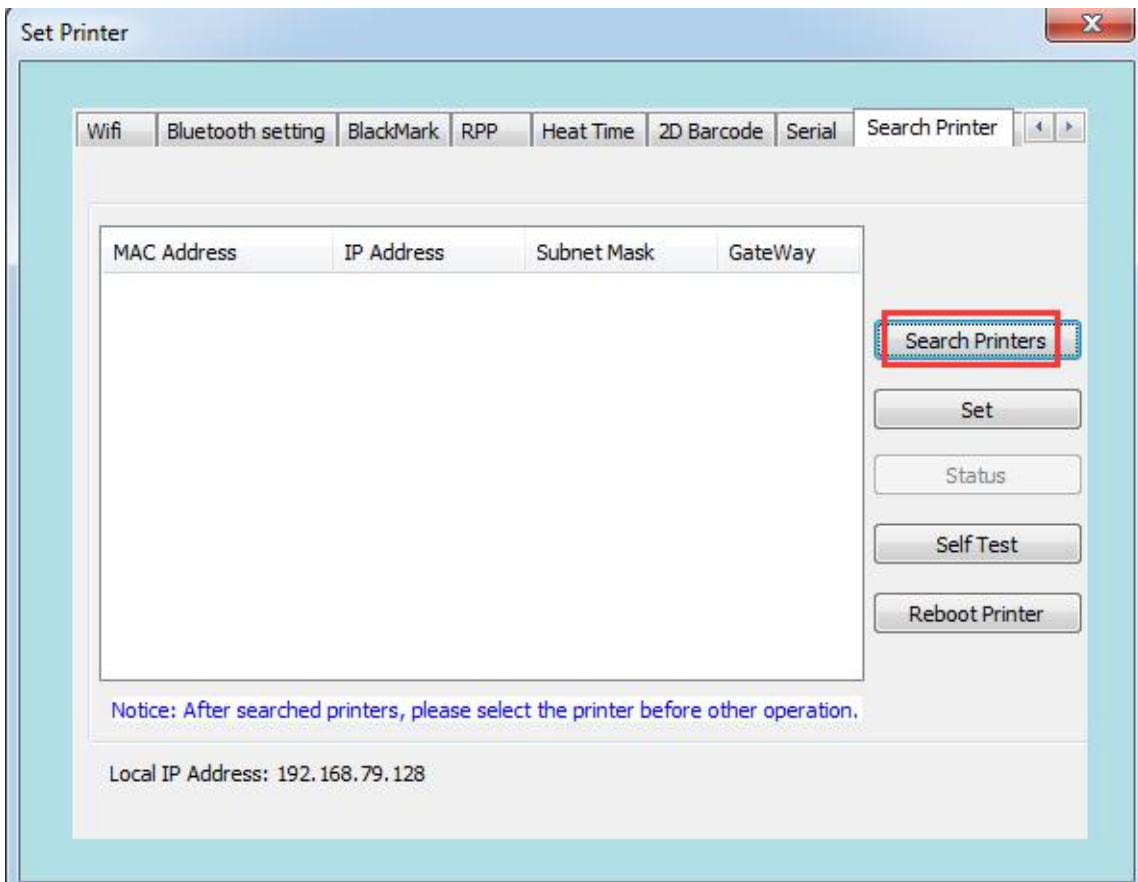


3.10 "Search Printer"

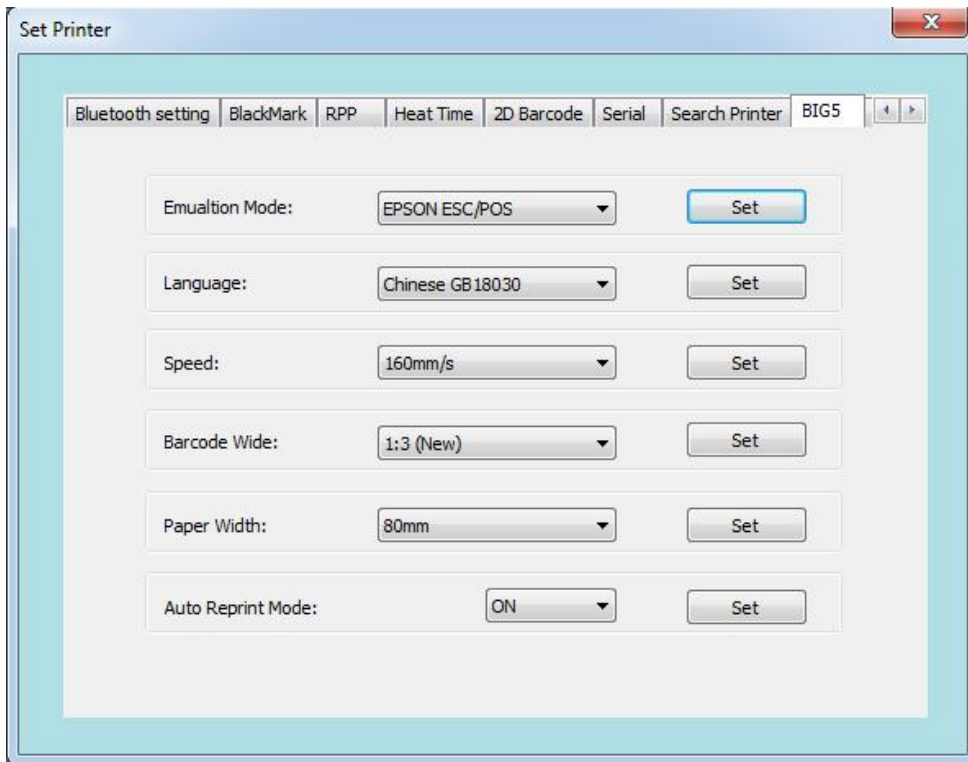
- a. Connect the network cable, select the network port, and set the corresponding IP address.



b. Select "Search for Printer". After the printer is found, the corresponding MAC address, IP address, etc. of the printer will be displayed. Select the printer and then perform related configuration or operation.

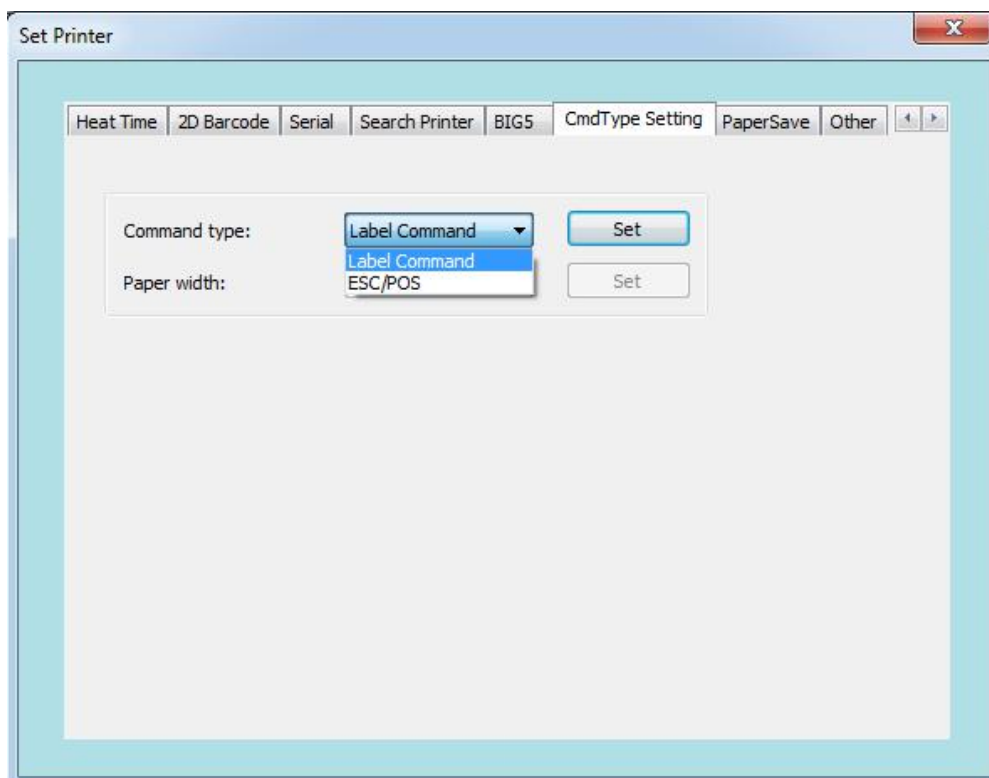


3.11 "BIG5" (only applicable to Traditional Chinese (Taiwan) models)



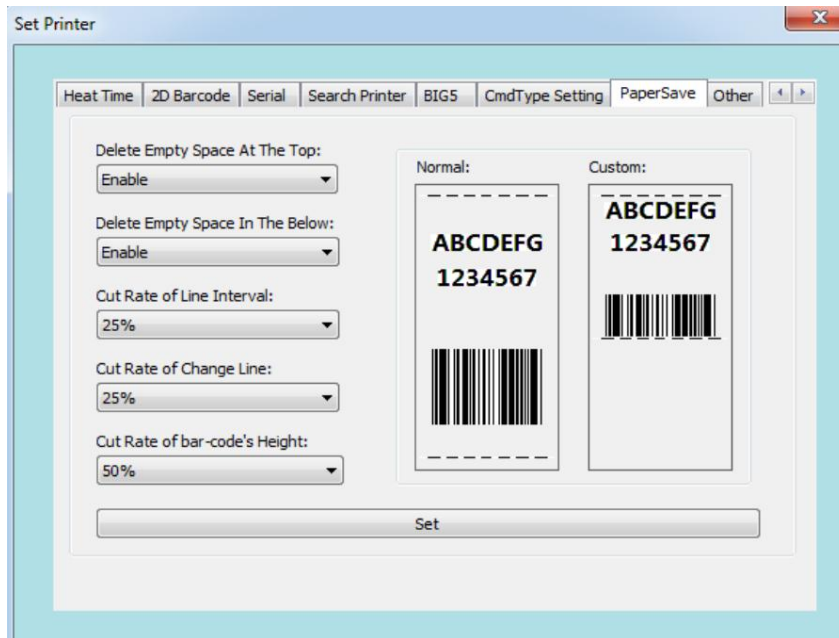
3.12 "Command Type Setting"

There are two types of commands: label command and ESC/POS command.



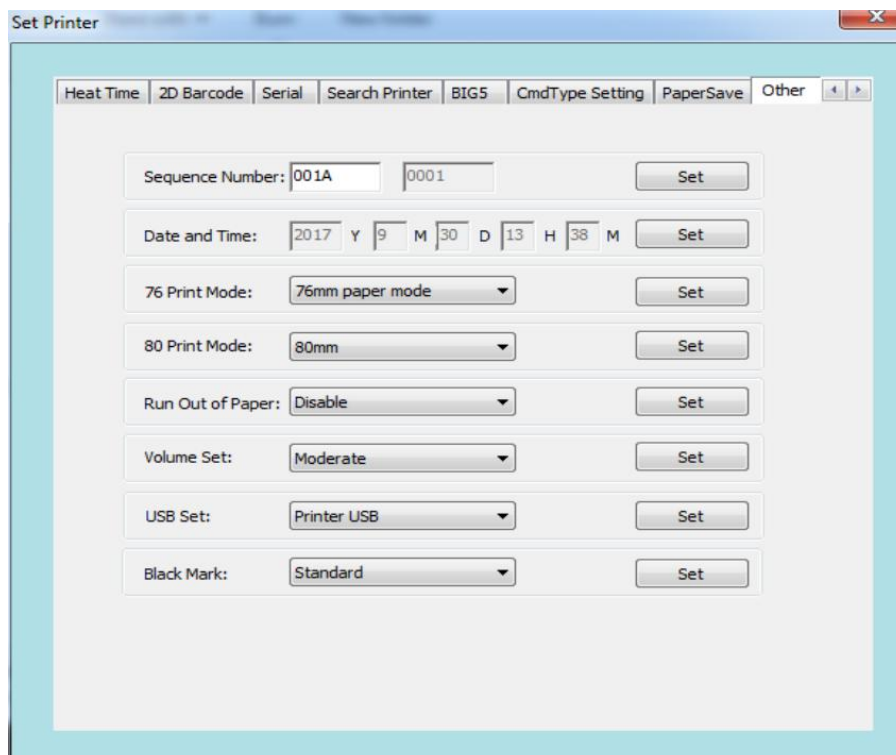
3.13 Paper saving

As shown in the figure below, the paper saving settings are on the left, and the right side is divided into normal paper and paper saving previews. After setting, click "Set".

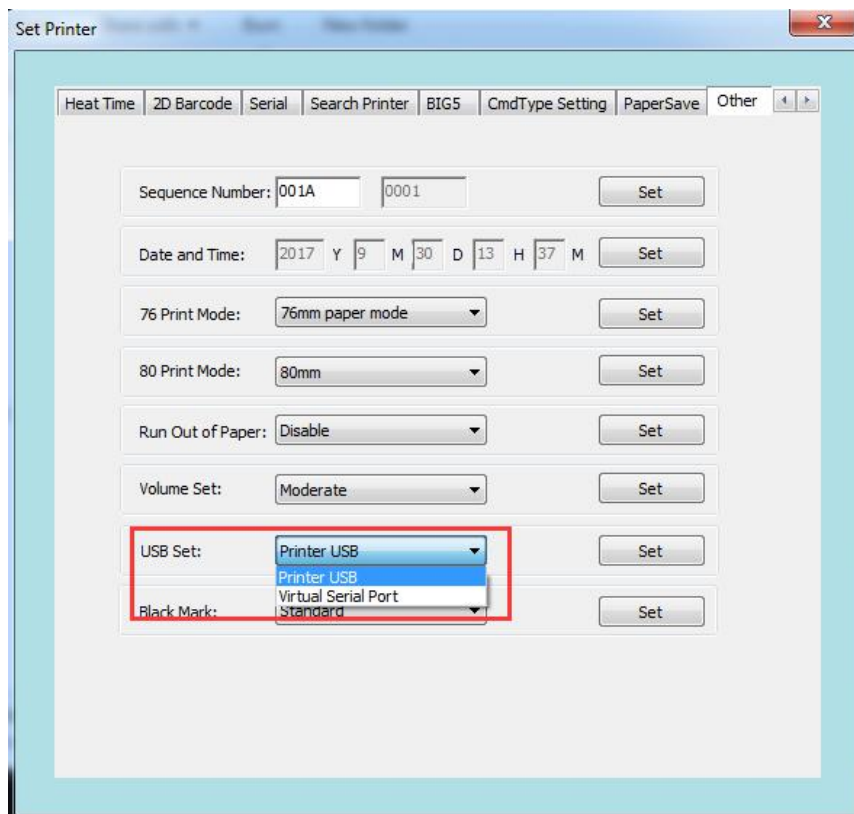



3.14 Other

You can set the serial number, etc. in "Others".



In USB setting interface (function), you can set USB as the virtual serial port and click "Set"; after successful setting, the printer will automatically shut down and you need to restart the printer manually; after restarting, go to the home screen to configure the serial port, and then the serial port printing function can be used. (Note: This function is a custom function, which cannot be used without special customization)



 **Warning:** The contents of this Manual shall not be changed at will without consent. Rongta Technology (Xiamen) Group Co., Ltd reserves the right to change the product in terms of technologies, parts, software and hardware. Please contact the dealer for further information of the product. No part of this Manual shall be reproduced or spread in any form or by any means without permission.